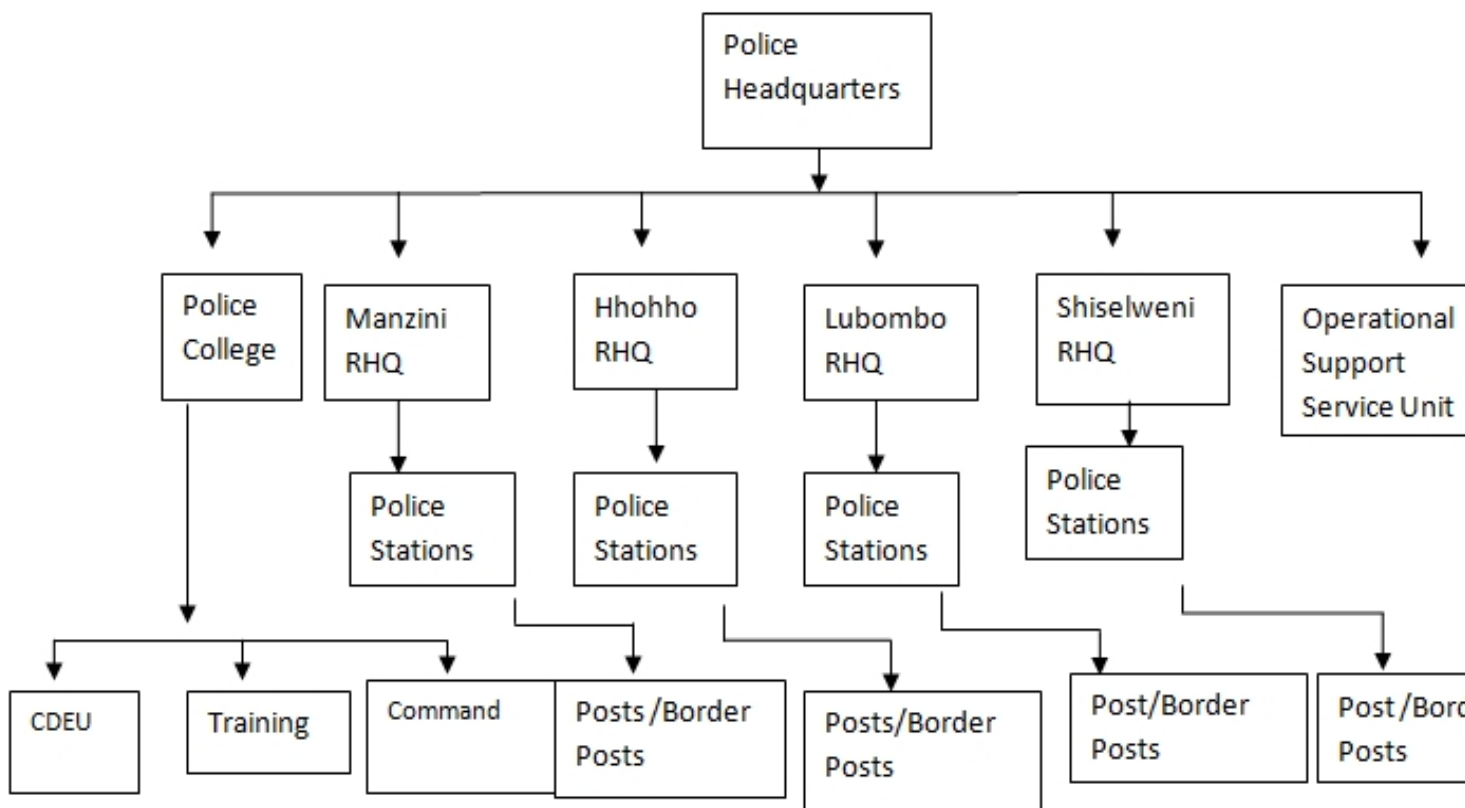




Organization

The operational control and command of Royal Swaziland Police Service is structured in the following format:-



The Operations and general policing is directed and controlled at the Headquarters, which is situated in the capital city of Mbabane. It is where the Executive Command of the service is based i.e. Commissioner, the two Deputies and the eight Directors of Departmental portfolios. Then in each of the four geographic of the country there are Regional Headquarters, fully fledged Police Stations, and Satellite Police Posts. The Regional Headquarters supervise the operations of each and every Police Station, and the Stations oversee the functioning of the Posts and Border Posts. General policing and maintenance of law and order is done at station level and monitored and/or supervised by the Regional Headquarters. There are twenty-three (23) Police Stations

throughout the country, twenty-two (22) Police Posts, twelve (12) Border Posts, and one Airport Security monitoring post.

Hereunder is a table showing the distribution of Regional Headquarters, Stations, and Posts.

REGION
STATION
POSTS
BORDER POSTS

Hhohho
Mbabane
Pigg's Peak
Lobamba
Horo
Bulembu
Mbabane City Post
Mbabane post
The Gables
Ezulwini
Ngwenya
Bulembu
Matsamo

Manzini
Manzini
Matsapha
Mliba
Mafutseni
Malkerns
Mankayane
Sidvokodvo
Bhunya
Manzini Bus Rank
Satelite Bus Rank
Mhlambanyatsi
Mahlangatsha
Lushikishini
Fairview North
Luve
Riverstone police post
Lundzi
Sandlane
Matsapha Airport

Lubombo

Siteki
Tshaneni
Lomahasha
Big Bend
Siphofaneni
Simunye
Lubulini
Mpaka
Ngomane
Shewula
St. Philips
Sithobela
Tikhuba
Mlawula
Matata
Mhlumeni
Mananga
Lomahasha

Shiselweni
Nhlangano
Hlathikhulu
Lavumisa
Hluthi
Gege
Ka-Phunga
Mahlalini
Dumako
Debedebe
Sigwe
Matimatima
Jericho

Lavumisa
Mahamba
Gege
Sicunusa
Nsalitje